

4

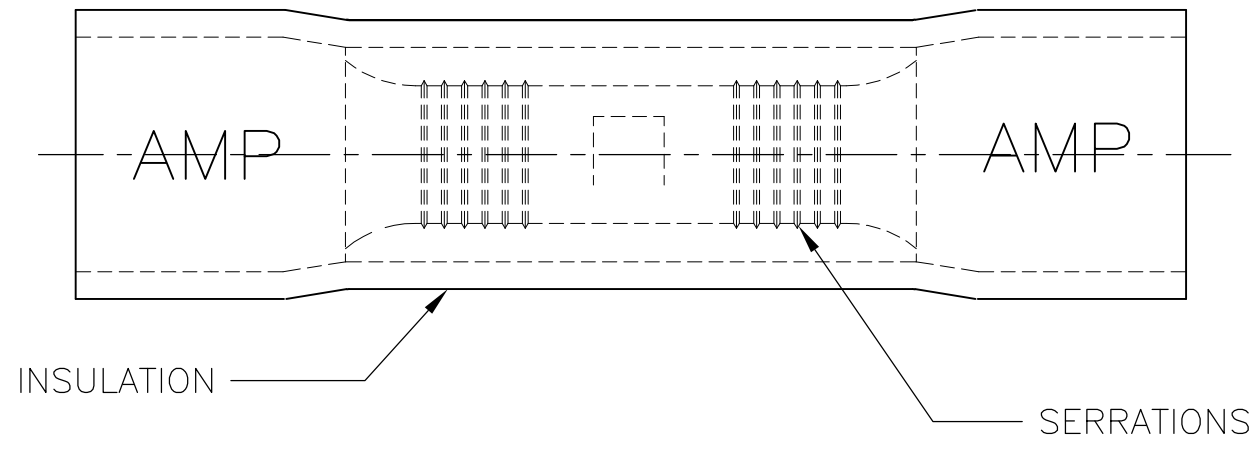
3

2

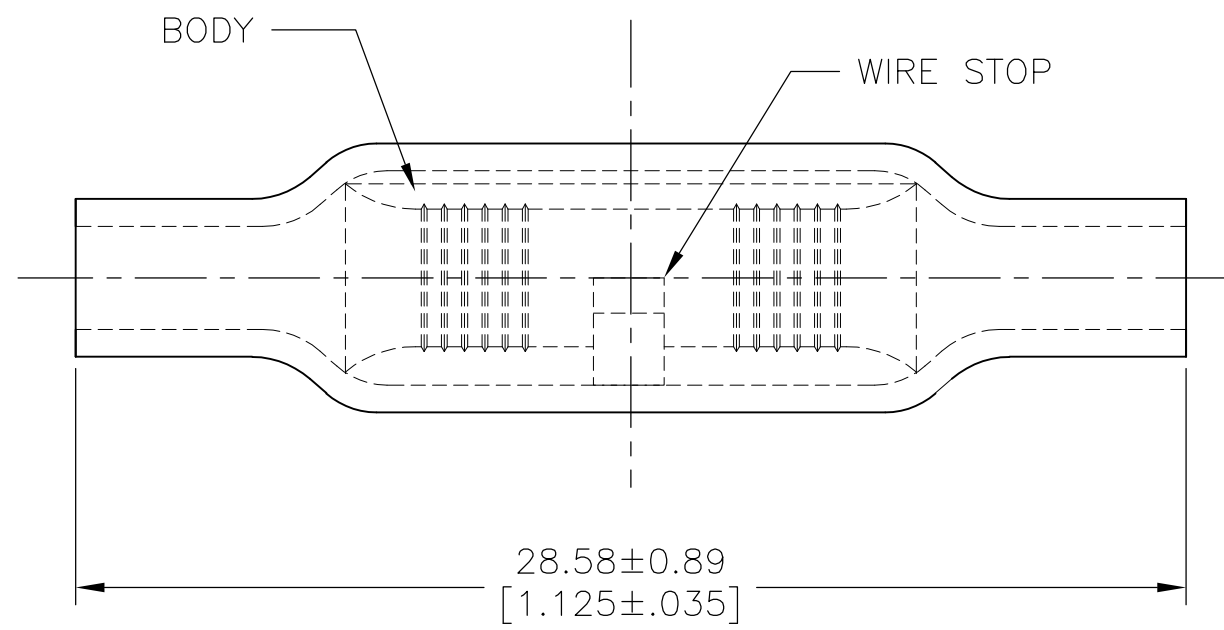
1

THIS DRAWING IS UNPUBLISHED. RELEASED FOR PUBLICATION
 © COPYRIGHT - By - ALL RIGHTS RESERVED.

LOC	DIST	REVISIONS			
P	LTR	DESCRIPTION	DATE	DWN	APVD
G	-	E1	REVISED PER ECO-11-020548	12JAN12	KH DR



1 FOR 7.14[.281] X 3.51[.138] MAX OVALED WIRE INSULATION DIA



OBSOLETE	50	LOOSE PIECE BOX	INSULATION: PVC COLOR: YELLOW BODY: COPPER PER ASTM B152 ANNEALED TIN PLATE PER ASTM B545	8-34205-2
	500	LOOSE PIECE		34205
	QTY	PACKAGE TYPE	MATERIAL & FINISH	PART NO

THIS DRAWING IS A CONTROLLED DOCUMENT.		DWN KIRAN HOLAL 12JAN12	STE TE Connectivity	
DIMENSIONS: mm [INCHES]		CHK ROHDE DANIEL 12JAN12		
TOLERANCES UNLESS OTHERWISE SPECIFIED:		APVD ROHDE DANIEL 12JAN12	NAME	
0 PLC ± -		PRODUCT SPEC	-	
1 PLC ± -		APPLICATION SPEC	WIRE SPLICE PLASTI-GRIP-BUTT-OVALED WIRE SIZE:12-10	
2 PLC ± -		WEIGHT	SIZE	CAGE CODE
3 PLC ± -			A3	00779
4 PLC ± -			DRAWING NO	RESTRICTED TO
ANGLES ± -			C-34205	-
FINISH			SCALE	SHEET
-			5:1	1 OF 1
		CUSTOMER DRAWING	REV	E1