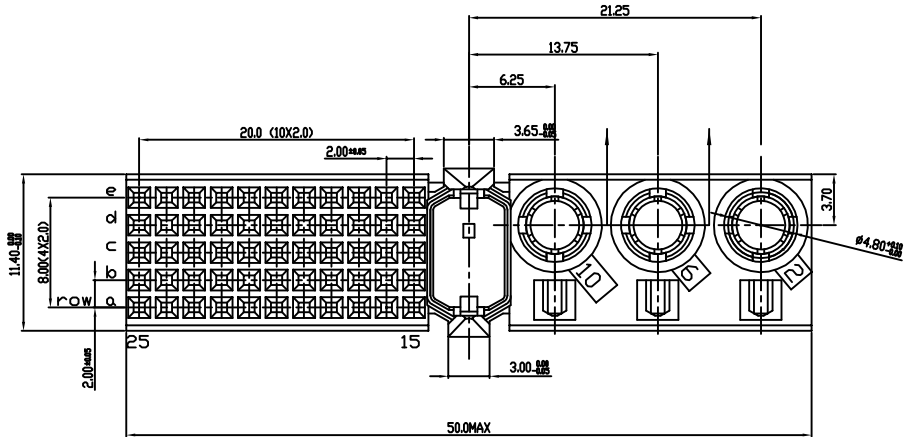
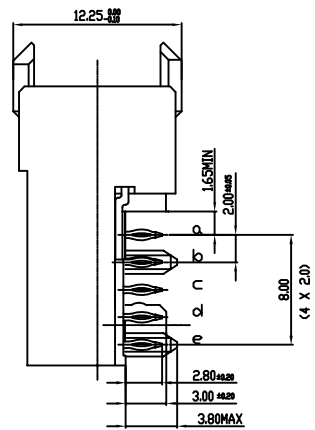
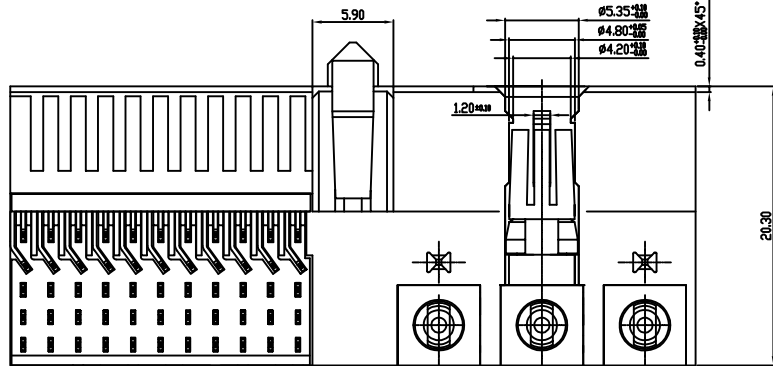


Tous droits strictement réservés. Reproduction ou communication à des tiers interdite sous quelque forme que ce soit sans autorisation écrite du propriétaire. Propriété de c FCI. Droits de reproduction FCI.



All rights strictly reserved. Reproduction or issue to third parties in any form whatever is not permitted without written authority from the proprietor. Property of FCI. Copyright FCI.

1 2 3 4



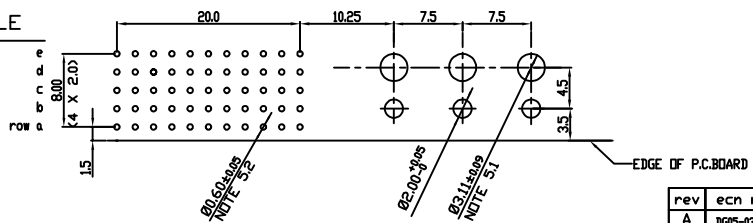
PERFORMANCE CHARACTERISTICS

CURRENT RATING 1.5A AT 20°C (FULLY LOADED)
 1 A AT 70°C (FULLY LOADED)
 RATED VOLTAGE : 500 V AC (CONT /CONT)
 OPERATING TEMPERATURE : -55°C TO 125°C
 CONTACT RESISTANCE 20 MΩ MAX
 INSERTION FORCE : 0.75N MAX/CONT
 EXTRACTION FORCE : 0.15N MIN/CONT
 INSULATION RESISTANCE : 10⁴ MΩ MIN

NOTES

- LEAD FREE INDICATOR LF=LEAD FREE
- PERFORMANCE LEVEL INDICATOR (REF DWG NOLBSC 201844.003)
- POWER CONTACTS -> 15 um Au over 2.0um Ni
- THIS PRODUCT IS CSA APPROVED. THIS PRODUCT IS UL RECOGNIZED.
- THIS PRODUCT (LF) MEETS EUROPEAN UNION DIRECTIVES AND OTHER COUNTRY REGULATIONS AS DESCRIBED IN GS-22-008
- FOR PRE-ASSEMBLED POWER PRESS-FIT CONTACT DETAIL, SEE DRAWING NR: - BSA201624.020
- ALLOWED PCB THICKNESS: MIN. 1.6 MM.
- PCB HOLE DEFINITION:

LAY-OUT P.C.B.- HOLE



	Ø drilled hole	Cu plating	SnPb plating	Ø finished hole
5.1	3.19 - 3.25	25 Øm min.	5 Øm min.	3.02 - 3.20
5.2	0.675 - 0.725	25/50 Øm min.	4/10 Øm min.	0.55 - 0.65

www.fciconnect.com		tolerance 1DEC ±0.1 1DEC 2DEC ±0.05 2DEC ANGLES 40°/30° HOEKEN	projection 	← MM →				
Dr	kason Luo 31.08.05	Product family	MILLIPACS	size	A4	Scale	3/1	
Eng	COLLINS LU 31.08.05	Spec ref		ECN	DG05-0305			
Chr	VICTOR LIN 31.08.05	Material						
Appr	JOSEPH HSIA 31.08.05							
title	MPACS 5+2R RA RCP CONN TYPE M			dwg no	BS,C ,202444,019		Rev.	A
catalog no	HM2E33PH5000----			customer copy	sheet 1 of 1			

rev	ecn no	dr	date
A	DG05-0305	Kason	29-08-05

1 2 3 4

PDM: Rev:A

STATUS: Released

Printed: Mar 15, 2011

A

B

C

D